



MASABA SERVICES LIMITED

MASTERS OF RELIABILITY



ABOUT US

WHO ARE WE

Masaba Services Limited was registered in Nairobi in April 2009 and has since made establishment in Uganda, Rwanda and Tanzania. Professionalism. We recruit people with the right qualifications and equip them with the right training to ensure that they provide value and quality solutions to our customers.



**WE'RE A PASSIONATE
COMPANY FILLED
WITH PASSIONATE
INDIVIDUALS**

VISION

To provide everyday reliable services to our customers in the telecommunication and energy sectors in East and Central Africa.

MISSION

To provide quality and reliable services to our customers through our dedicated teams that value customer satisfaction in the telecommunication and energy sector.



CORE VALUES

Reliable Services

We ensure our teams follow best practices in project implementation and strive to meet these quality services in time.

Team Work

We value and build functional and effective teams so as we achieve our goals. Our teams are guided by the motto "Together Everyone Achieves More!"

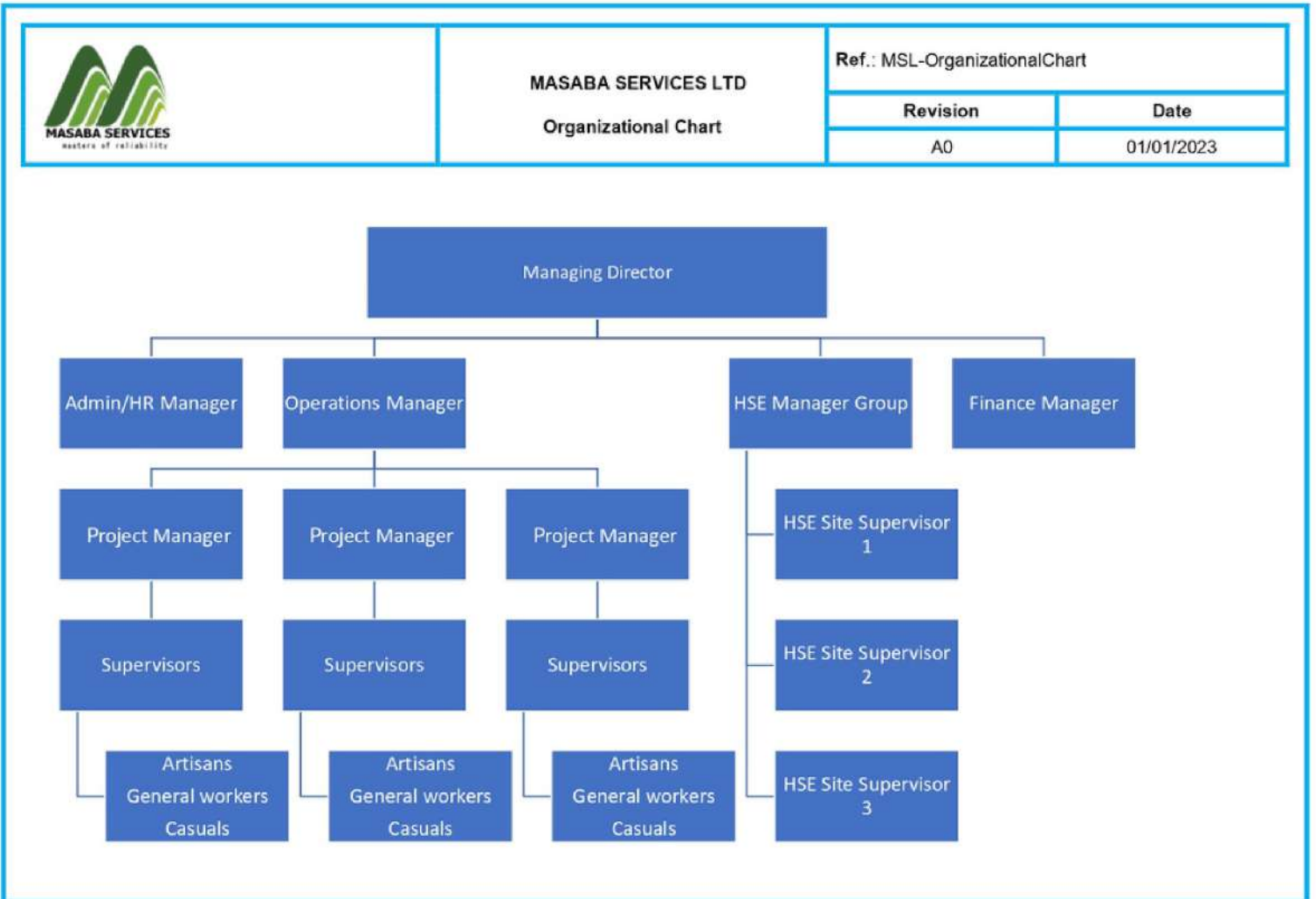
Customer Satisfaction

To deliver value to our customers we strive to exceed our customer's expectations and value customer loyalty based on our reliable and timely services.

Professionalism

To deliver value to our customers we strive to exceed our customer's expectations and value customer loyalty based on our reliable and timely services.

ORGANISATIONAL CHART



OUR SERVICES

Telecommunications

- Enterprise Network Installations.
- Turnkey BTS Civil Works.
- Turnkey Fiber Deployment.
- GSM Optimization and Inbuilding Solutions.
- Supply of Equipment & Materials.

Energy

- Hybrid Power.
- Hybrid Power Systems.
- Electrical Transmission Systems.

Civil Works

- Road construction.
- Building Works.

Telematics Solutions

- GPS Tracking.
- Asset Tracking.
- Fuel Management
- Video Telematics

Project Management

- Project Audit.
- Implementing MS Project Server.
- Project Performance Management.
- Developing Corporate PM Methodology.
- Establishing Project Management Office.





TELECOMMUNICATIONS

- Enterprise Network Installations.
 - Turnkey BTS Civil Works.
 - GSM Optimization and Inbuilding Solutions.
 - Supply of Equipment & Materials.
 - Turnkey Fiber Deployment.
-

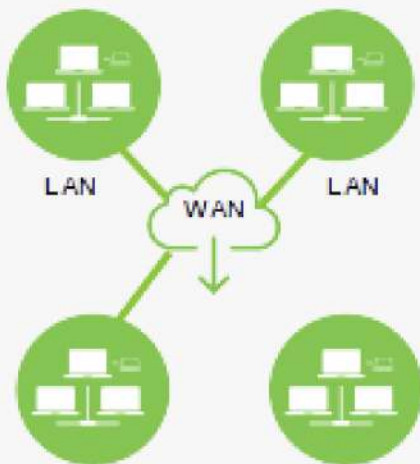


Enterprise Network Installations

We are the leaders in the deployment and maintenance of cloud computing services, enterprise network, wireless solutions, unified communication, and LAN/WAN deployments.

Structured cabling systems are the backbone of the modern information network. Whether LAN or WAN, we optimize your enterprise infrastructure with high performance, cost effective, customizable solutions that are easy to install and use.

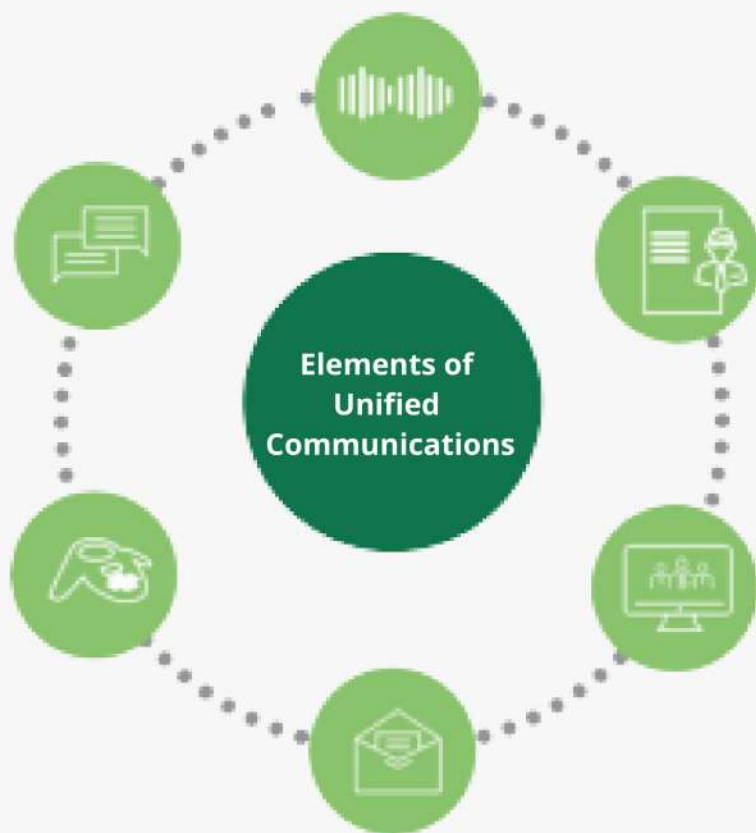
NETWORK TOPOLOGIES



**WAN (Wide Area Network)
topology**



**WAN (Wide Area Network)
topology**



VoIP - Voice over Internet Protocol

UC systems are built around VoIP service but are also compatible with PRI, POTS etc.

We understand that communications are an integral part of current day-to-day businesses. We, therefore, ensure we integrate all communications aspects ranging from Voice Over the Internet (VoIP) communication, teleconferencing, video conferencing into one suite for businesses to fit the current market.

Presence/IM

UC enables both IM and extensive presence features.

Video/Web conferencing

Many UC systems offer both video and Web conferencing

Email

Emails and voicemails are delivered to a unified inbox

Audio conferencing

Emails and voicemails are delivered to a UC supports audio conferencing on the fly.

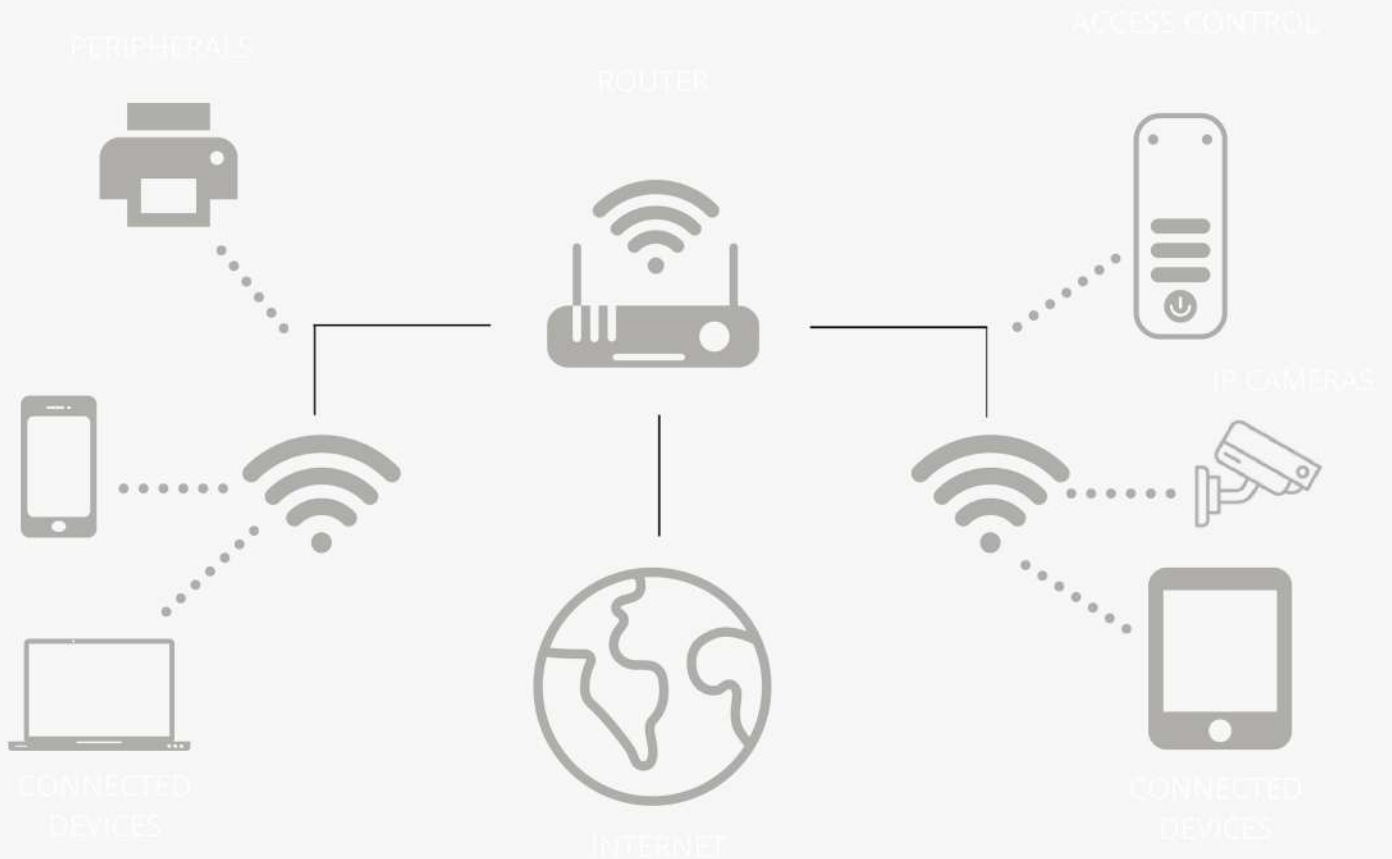
Text messaging

UC systems offer texting in addition to IM.



NETWORK IMPLEMENTATION.

No matter the size of your home or office, we ensure all your devices are connected to your wireless network. Through our enhanced testing methodologies associated with WIFI implementations, we ensure maximum WIFI coverage with no dark spots.



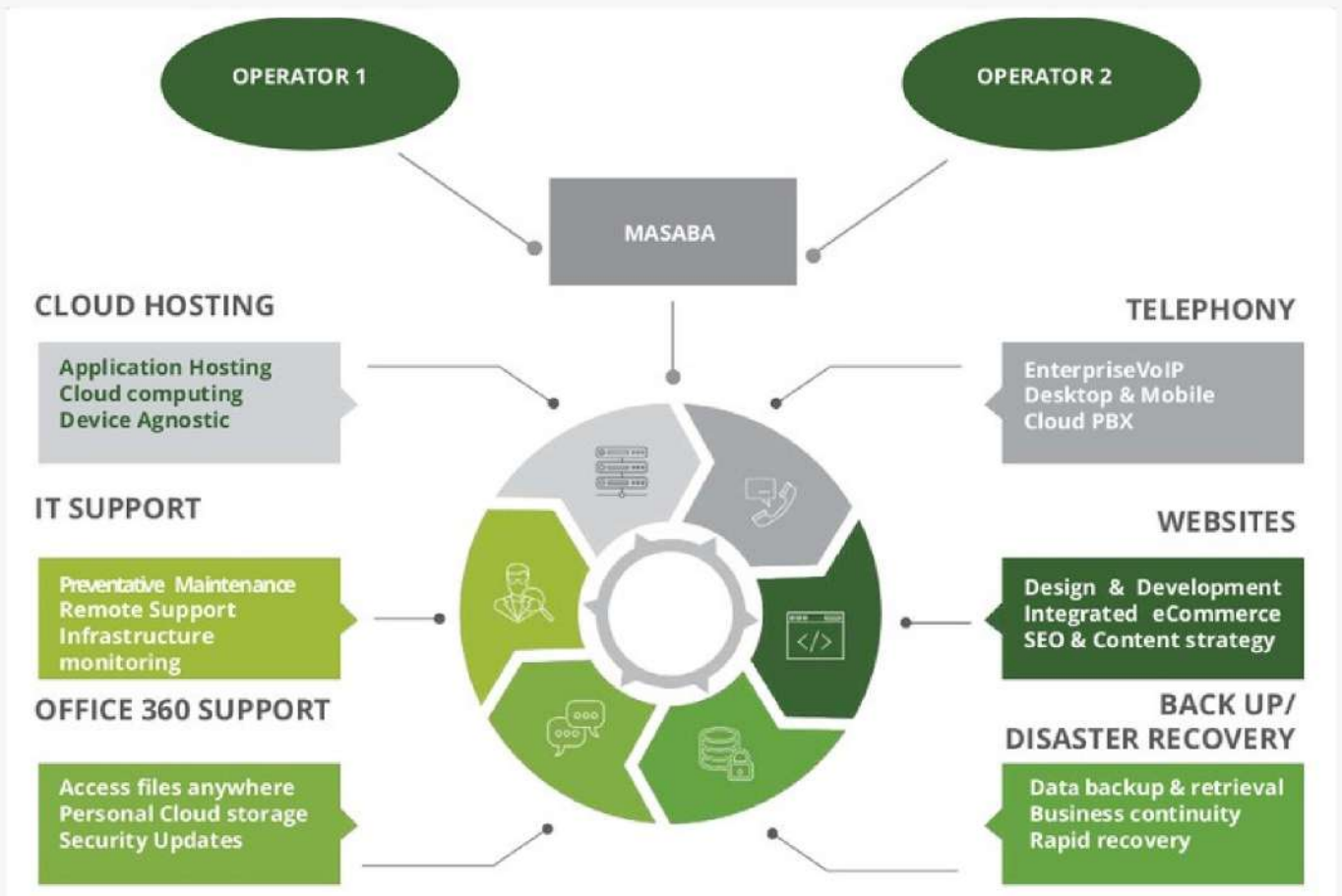
MANAGED SERVICES

In collaboration with other major operators in Kenya, we are able to provide end-to-end internet connectivity to your premises, through fiber and or microwave links. The benefit of using this service is the option of combining different operators to achieve a 99.99% internet uptime.

Our dedicated customer service desk and NOC team will ensure zero inconvenience to your internet use 24-7.

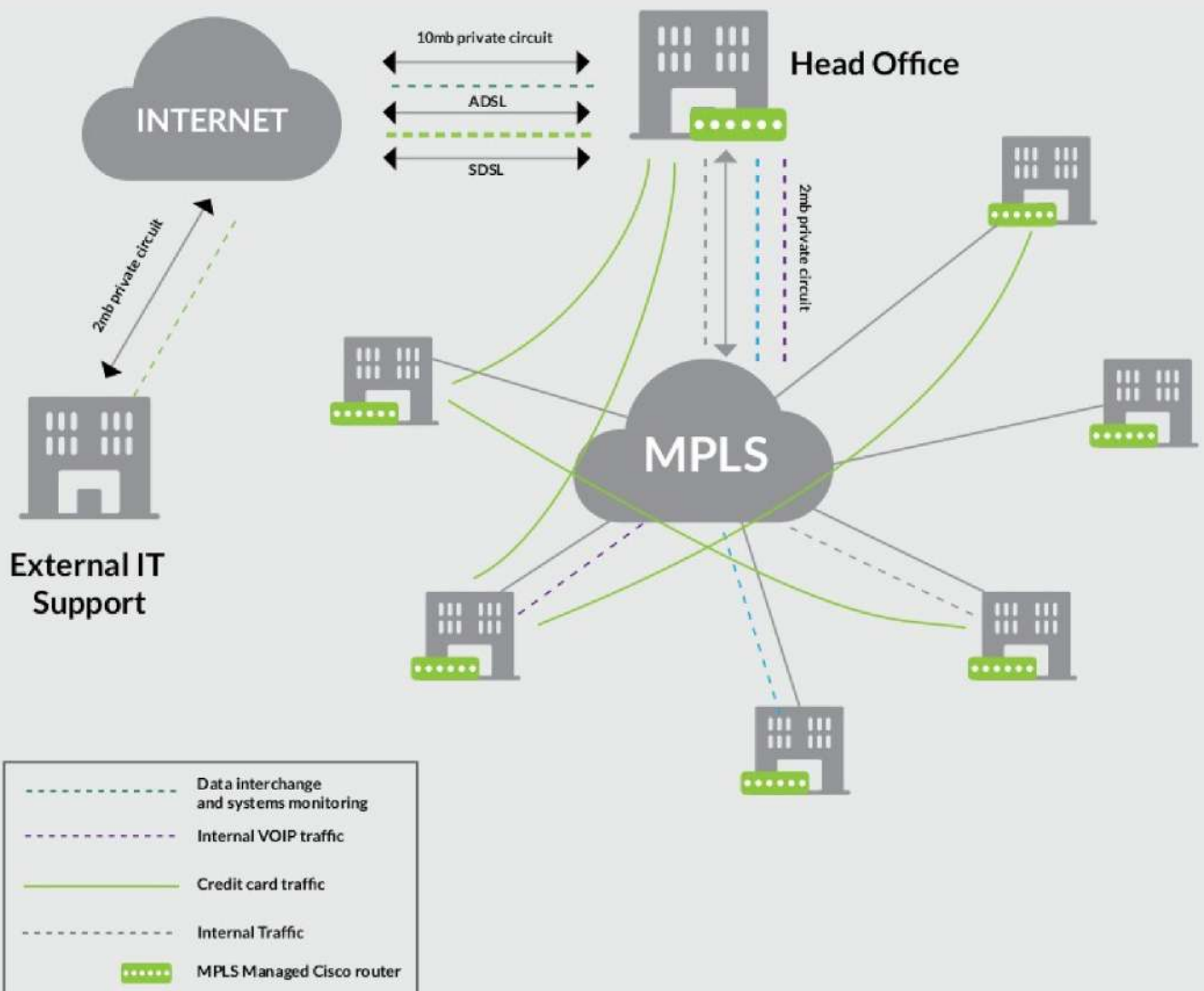


We provide and support a range of cloud services to support your business processes;



We provide a secure and easy setup VPN managed service, thereby enabling your employees to work anywhere away from the head office with ease.

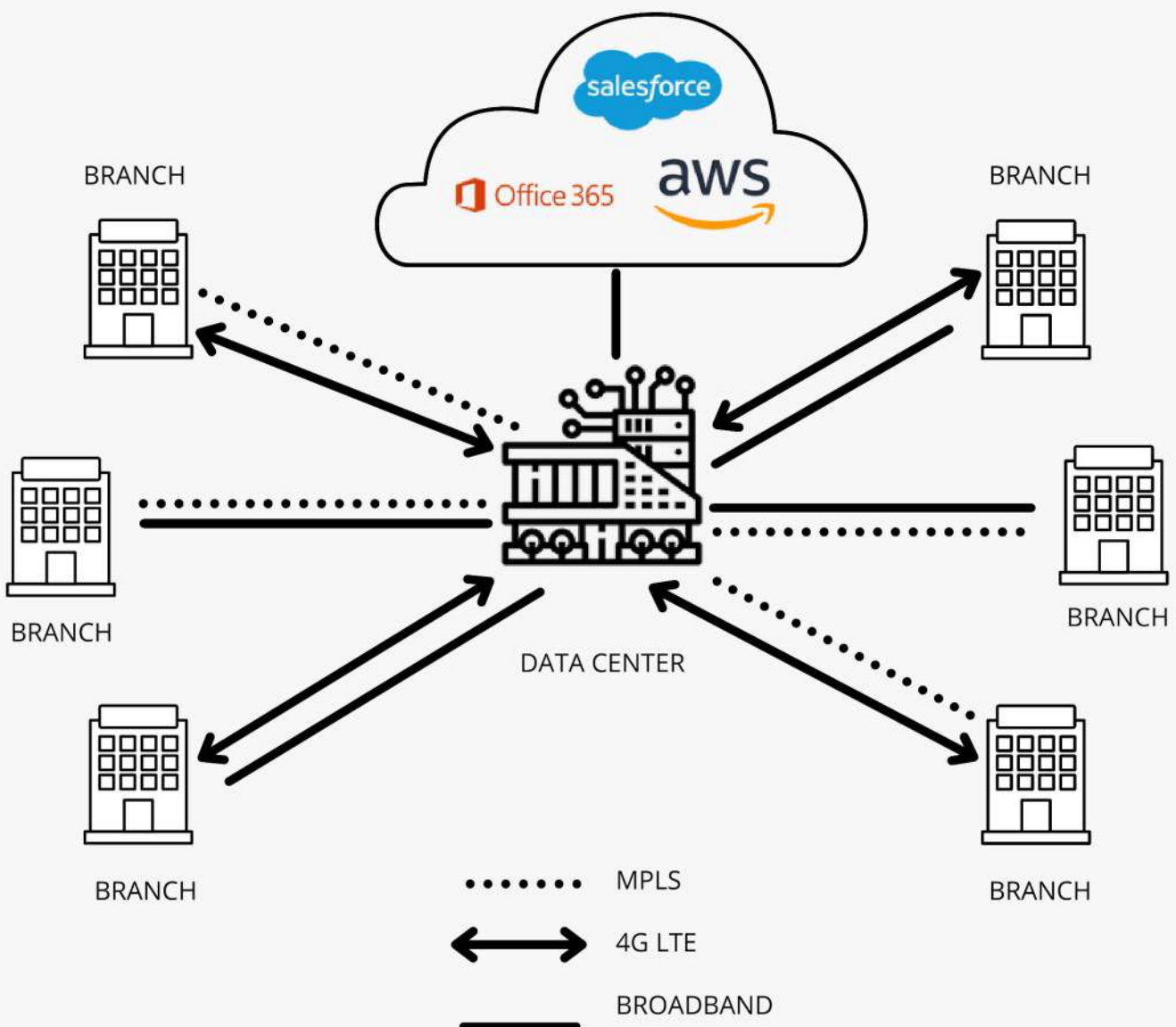
Through our MPLS managed service, we are able to seamlessly link up branches with the headquarters, thereby saving on operation costs associated with setting up on every branch.



At Masaba, we deliver a software approach of managing wide-area networks, ease of deployment, central manageability, reduced costs and, can improve connectivity to branch offices to the cloud.

Our Main SD-WAN's chief features are the ability to manage multiple connections from MPLS to broadband to LTE & the ability to segment, partition, and secure the traffic traversing the WAN.

Masaba SD-WAN is focused on clients that have invested in cloud applications such as Office 365, Google Salesforce, and others. The internet is used as the network and measures are put into place to provide bandwidth optimization and Quality of Experience.



Turnkey Fiber Solutions

For operators looking to set up internet infrastructure in east Africa, we offer the following end-to-end services for your clients. We have regional experience in setting up fiber and microwave links, our key competitive attribute being, OUR FOCUS IN CUSTOMER EXPERIENCE JOURNEY.

Turnkey fiber solutions:

Survey and design of the proposed area.

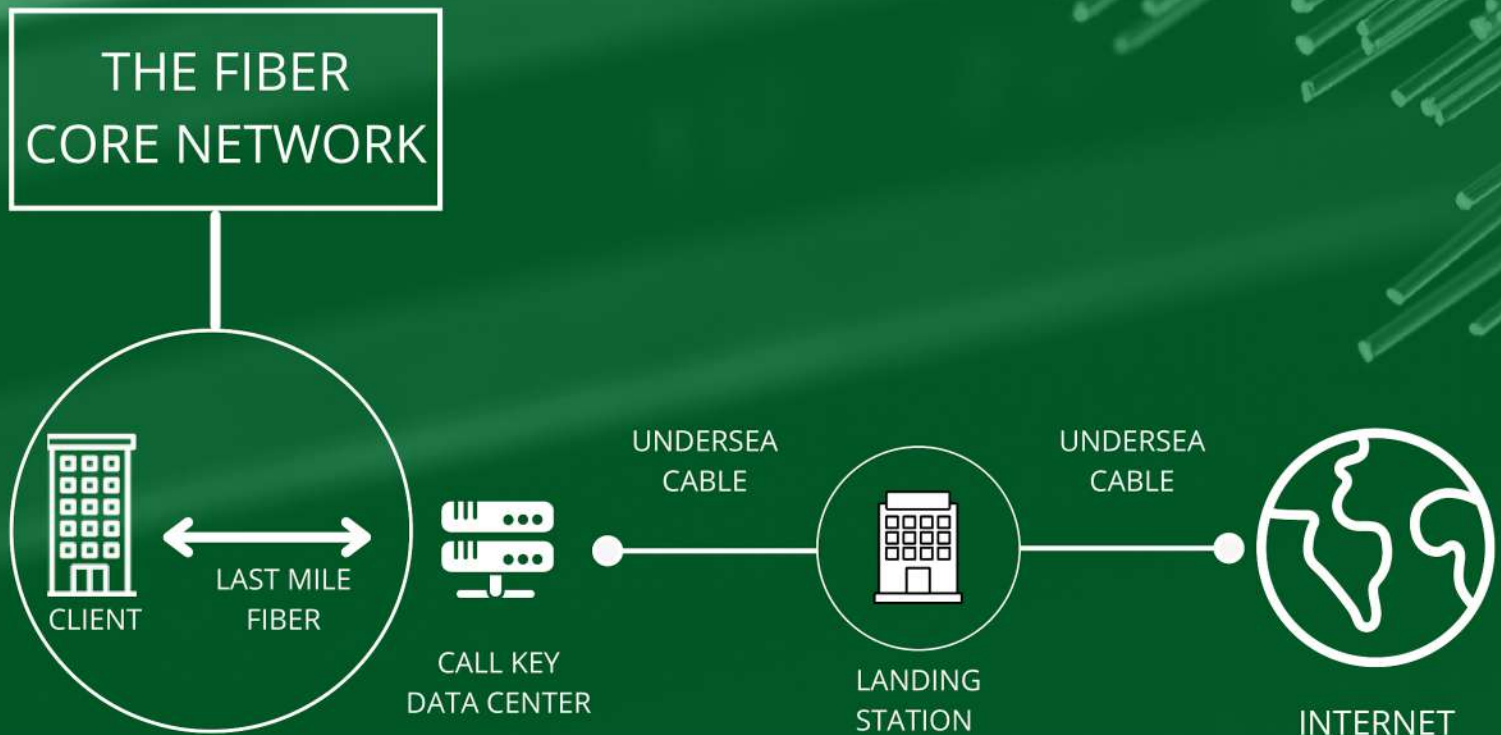
Procurement of materials.

Deployment of fiber in the area.

Building acquisition.

Reseller services to the fiber-ready buildings.

Support and preventative maintenance for your clients.

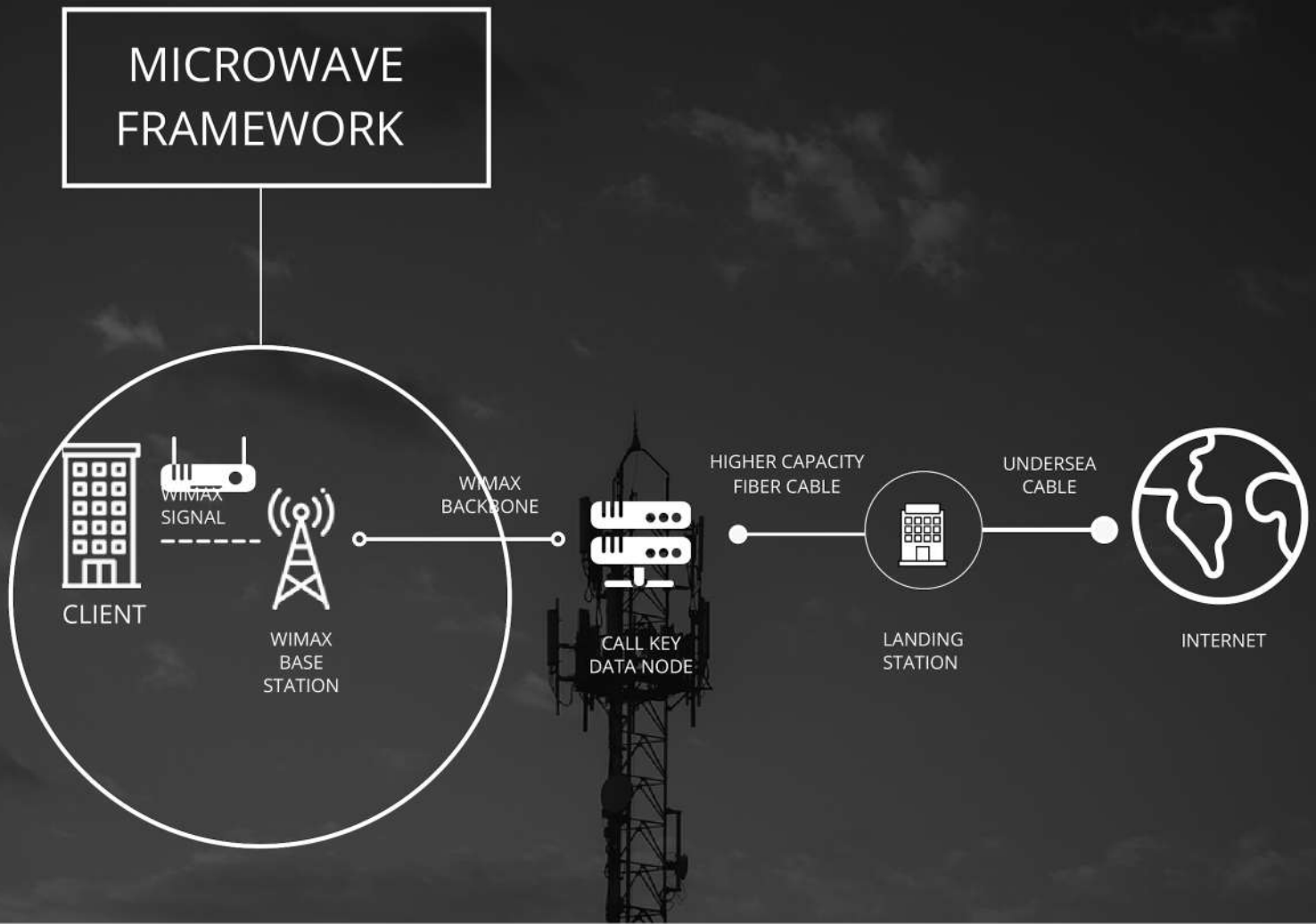


Wireless Solutions

Where fiber-optic access to the building is not available, we connect clients using WiMAX as the last mile. We configure and manage POINT TO POINT and POINT to MULTI-POINT Microwave equipment.

Our scope capabilities include:

- Survey and design of the proposed area.
- Deployment of microwave equipment in the area.
- Support and preventative maintenance.



GSM Optimization and In-building Solutions

An in-building cellular enhancement system, commonly implemented in conjunction with a distributed antenna system (DAS), is a telecommunication the solution which is used to extend and distribute the cellular signal of a given mobile network operator (hereafter abbreviated as an MNO) within a building:

- 2G-4G drive test.
- Walk test.
- Benchmarking.
- IBS Solutions.

Supply of Equipment & Materials.

We have a large pool of authorized manufactures who supply the following equipment for construction

- GSM Antennas.
- Fiber Materials.
- VSAT Equipment.
- Antennas.
- BTS Towers.
- WiMAX unlicensed and licensed radios

GSM Optimization Phases

Initial Optimization

- Site Audit.
- Property parameters use.
- Verifying neighbors list.
- Reviewing frequenc plan

Primary Optimization.

- Verifying existing coverage, site design
- Analysis and identification of problem cell/areas.
- Prioritization of problems.
- Solution identification and implementation.
- Retest the problem areas.
- Consistency check of the OMC database.
- Fine-tuning of parameters.

Maintenance Optimization

- Ongoing process weekly.
- Database maintenance and consistency audits.

ENERGY

- Hybrid Power.
 - Hybrid Power Systems.
 - Electrical Power Transmission Systems.
-



Hybrid Power

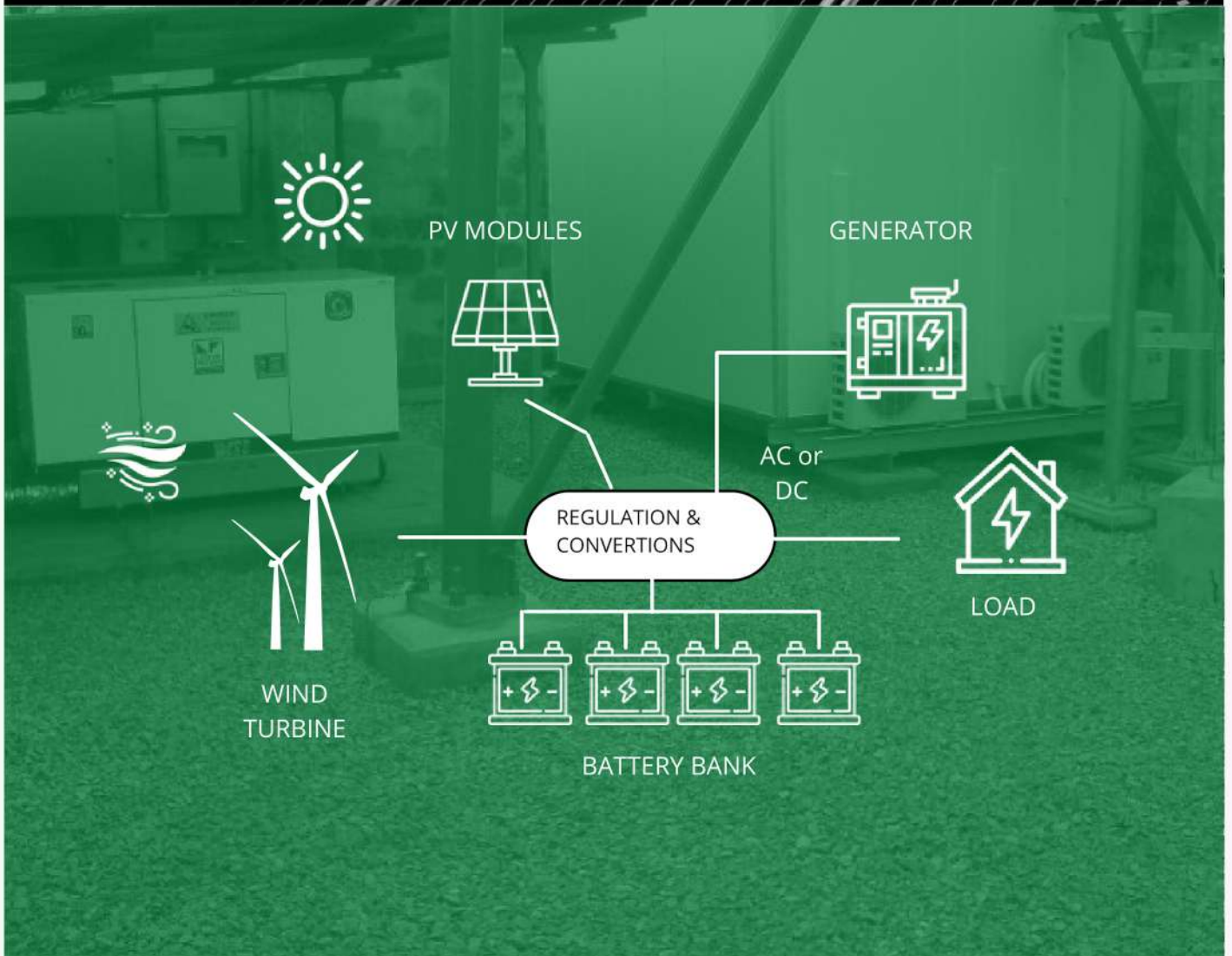
In remote regions and isolated industrial plants, energy supply is often produced by diesel generators or other small fossil-based power plants. Masaba offers a more effective solution with Hybrid Power.

Renewable energy systems supplement traditional generators and in combination with an intelligent control system, they provide energy that is economical, reliable and more environmentally sustainable. This system will reduce your dependency on fuel, while significantly decreasing the carbon footprint of your company.



Hybrid Power Systems

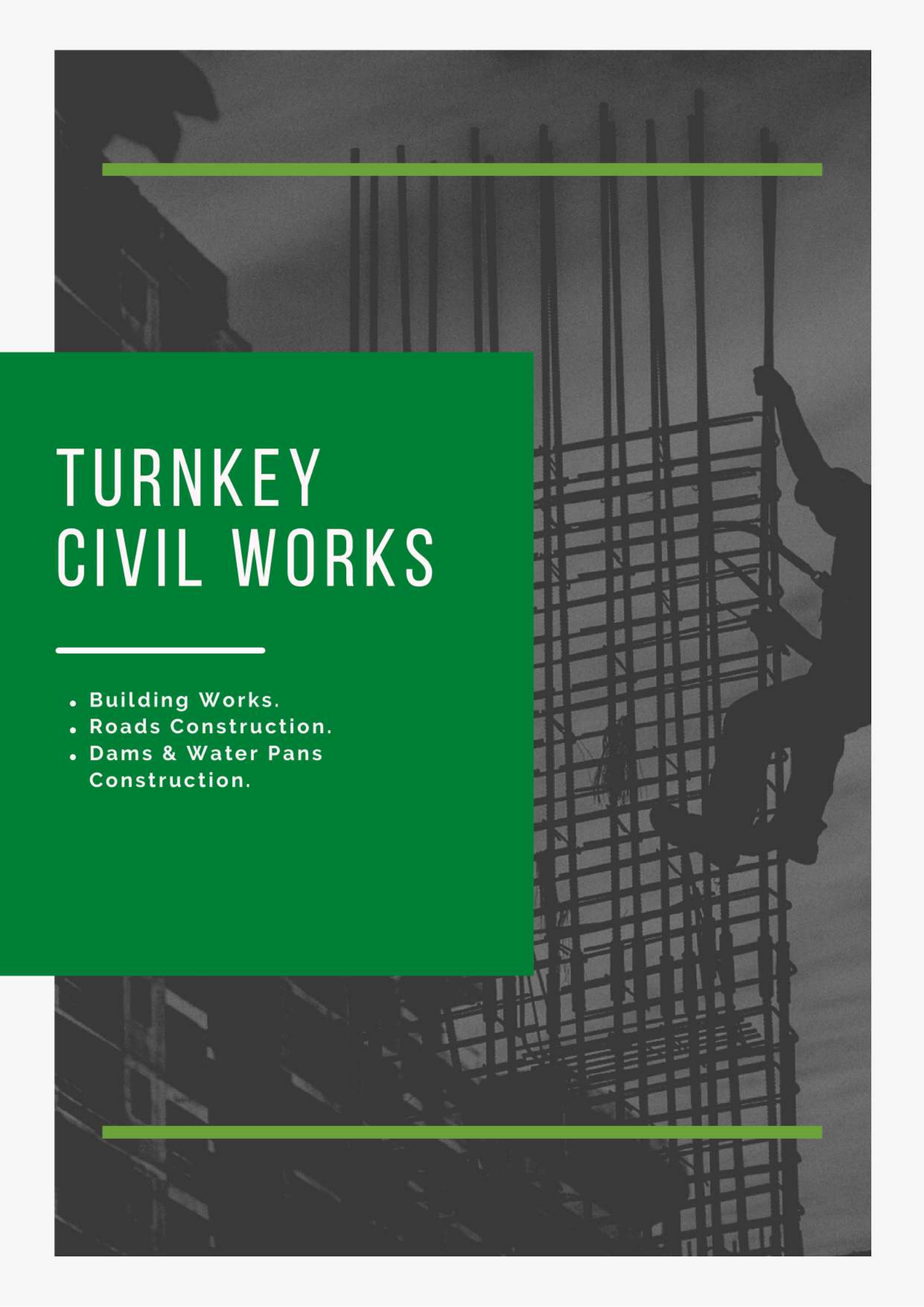
Hybrid power plants provide energy security using diverse energy sources and an ability to respond to load fluctuations. They ensure a reliable and cleaner electricity supply for both private and public users.



Electrical Power Transmission Systems

We have the capacity to supply install, test and commission overhead HT/LT transmission lines. These includes poles, conductor/cables, insulators, hardware fittings and ACB.

We offer 24x7 support with expert technicians and engineers who are available all hours of the day, 7 days a week, 365 days a year. With Techno 24x7 Support.



TURNKEY CIVIL WORKS

- Building Works.
- Roads Construction.
- Dams & Water Pans Construction.

TURNKEY BTS CIVIL WORKS

As a Turnkey service provider, we are involved in the creation of BTS or Cell sites for various large Telecommunication Companies to increase their network coverage and/or improve call quality for mobile phones. We design, construct and implement Telecommunications infrastructure.

Some of these activities involved include;

- Soil test.
- Tower design.
- Shelter foundation.
- Tower erection.
- Road access.

Other aspects of the work include various engineering works such as:

- **Civil & structural construction**

Mast, fence, and equipment shelter installations and various foundation and drainage creation.

- **Electrical**

Electrical cabling and connections, earthing and lighting installation.

- **Electronic**

Installation of communications equipment, site alarms monitor, antennae, radiofrequency cabling, and interruptible power supply.

- **Mechanical**

Back-up diesel generator installation.



CIVIL WORKS

- Building Works.
 - Roads Construction.
 - Dams & Water Pans Construction.
 - Infrastructure Works
 - Civil Engineering Works
 - Structural Steel Works & Electro-mechanical Installations
-

BUILDING WORKS

Building construction is the process of adding structure to real property or construction of buildings. We are registered under National Construction Authority Class 2 for construction of buildings.

Masaba services take on the role of the main contractor for small to medium-sized projects and perform project management services to coordinate specialist trade for industrial /commercial projects. We also provide design inputs and engineering solutions as a value-add service to our clients.

The objectives of the client are at the top of the priority list when executing our work.



Road Construction

The construction of a new road – whether from asphalt or concrete – requires the production of an excellently bonded pavement structure, beginning with a stable base layer and going all the way to a precisely leveled surface course.

Dams & Water Pans Construction

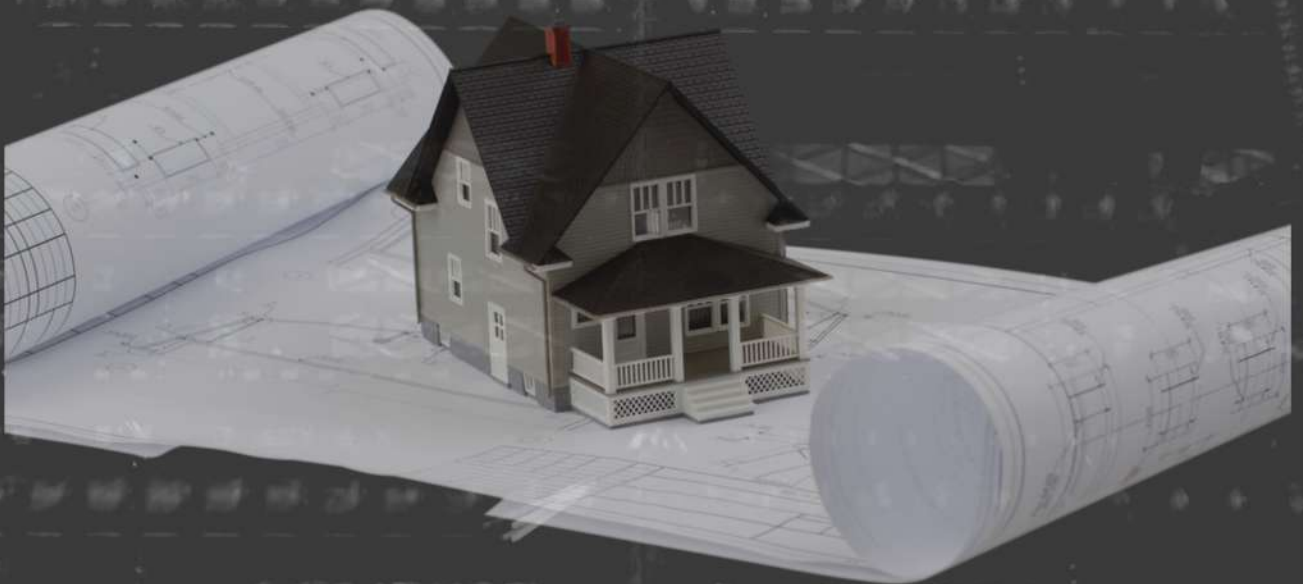
We offer high-quality services including;

- Custom designing of your water pan anywhere in East Africa.
- The excavation of water pans of all sizes.
- Supply and installation of dam liner of the right gauge.
- Building sedimentation tanks, (silt traps) to keep dirt and debris from your dam.
- we fence and roof your dam
- using cost-effective methods



CIVIL ENGINEERING WORKS

Focused on delivery of specific client requirement, we employ modern technology, in the construction of offices and warehousing developments as well as larger scale infrastructure such as power stations, clean and dirt water treatment plants and reservoirs. Our capability in civil works has raised our profile such that we are able to successfully bid and construct more complex and challenging projects.





Structural Steel Works & Electro-mechanical Installations

This division houses the following sections;

- Shop fabrication works
- Mechanical installations works
- Electrical & instrumentation works

Masaba Services Ltd has the capacity to undertake light and heavy fabrication using alloy steels, stainless steels, carbon steels and are ISO certified for the fabrication of structural steel, pressure vessels and equipment

Infrastructure Works

From paths to highways, footbridges to flyovers, we continue to work with the various public sector clients across East Africa, to improve on existing roads and bridges network. Our infrastructure experience covers asphaltic roads, bridges (steel or concrete), airport runways, marine and port facilities.



HEAVY EQUIPMENT

We offers lease services for the following Heavy Equipment within the East Africa Region.

- Bull Dozer
- Tracked Excavator
- Dump Truck
- Motor Grader
- Vibrator Roller
- Water Distribution Truck
- Front End Loader
- Backhoe Loader
- All Terrain Crane
- Trencher
- Reach Stacker
- Industrial Forklift



WFHU 114703
22G1
MAX GROSS 20,400 kg
45,200 lbs
7,000 kg
15,500 lbs
332 mm
13.11 in

CASE STUDIES

These are our hardworking engineers who have made it possible to reach our targets.





VEHICLE TELEMATICS

- GPS Tracking.
- Asset Tracking.
- Fuel Management.
- Video Telematics.

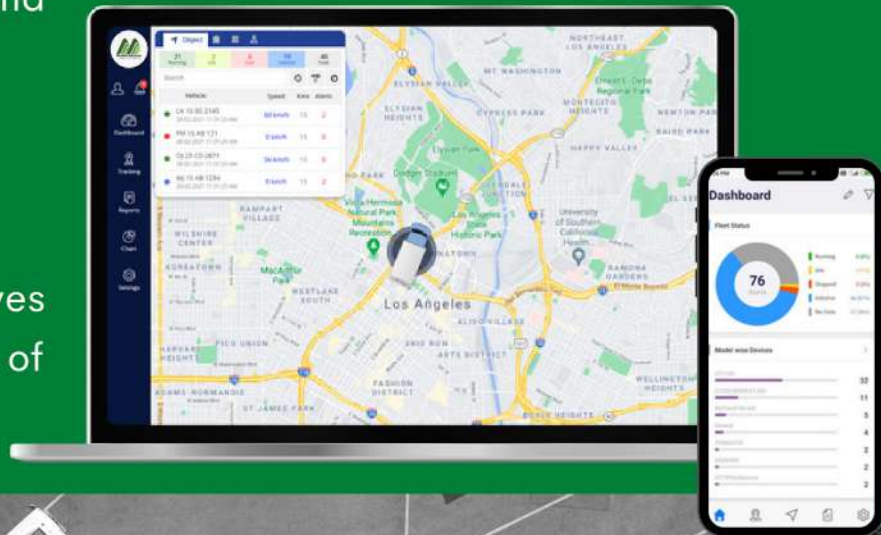


TELEMATICS

Telematics is a word with the concept of Telecommunication and Informatics together. In Simple words, Vehicle Telematics is a system of remotely monitoring and obtaining data from any Mobile assets like Car, Van, Trucks, or Ship by using the Global Positioning System (GPS) and onboard diagnostics. This involves the collection of a large amount of data every second.

Why choose Kozi Telematics

- Easy to use.
- Innovative.
- IOT driven.



Fleet Management

Fleet management is used to describe vehicle onboard communication services and applications that communicate with one another via GPS receivers and other telematics devices.

Our Fleet management system aims to maximize efficiency, increase productivity and improve safety for an organization's vehicles and drivers.

With our Fleet Management system, one is able to have the following benefits:

- Run more efficient operations with optimized maintenance and logistics.
- Improve fuel efficiency through optimized routes and vehicle maintenance.
- Monitor driver performance for better safety.
- Implementing IoT analytics solutions.
- Increase overall business visibility through reports and efficient vehicle tracking.



WHY CHOOSE MASABA TELEMATICS

Manage multiple fleets, plan efficient routes, monitor driver behaviors, and accomplish much more with Kozi Telematics. Our practical platform features not only simplify fleet management but also give you a competitive edge over others.



GEOFENCING



One major benefit of our fleet tracking technology is the ability to maintain vehicle location in any area. With GeoFencing you can create GeoBound™ clusters and assign vehicles to a specified GeoArea. Using automated driver alerts or our GPS reporting dashboard, you know precisely when your vehicles enter and exit the GeoArea. GPS satellite mapping allows you to easily pinpoint locations to monitor specific sites. Highlight polylines over roads and highways to ensure fleet movement through optimized routes. Create GeoAreas around entire regions for personalized asset monitoring.

Using 10 second updates, you can stay informed on fleet activity in any specified GeoFence. View where there is vehicle overlap in real-time or receive automated alerts that inform you when vehicles cross any GeoArea.



SECURE VEHICLE DISABLING (IMMOBILIZATION)

Keeping in mind the scale of vehicle thefts and the demand for a solution in the market, Kozi introduced a remote vehicle disabling system in its GPS trackers known as secure engine cut-off.

The system is used to prevent unauthorized users from operating a vehicle and to gradually decelerate and stop a vehicle in-transit under certain pre-determined conditions.

VIDEO TELEMATICS

Kozi video telematics does what GPS tracking systems alone cannot do plus more. Experience what it's like to go beyond tracking with our video monitoring solutions.

✔ Driver Monitoring (DMS)

DMS technology can assess the driver's attentiveness behind wheels and warn the driver with actionable in-cab alerts if any sign of drowsiness or fatigue or distraction is detected.

✔ Driving Behavior Analysis (DBA)

Leveraging data on the reckless driving behavior of your drivers will help reduce the accident rate, rate, or coach drivers to increase safety awareness on the road, and improve the fuel economy of your fleet.

✔ Real-time Tracking

The GNSS module provides precise real-time location data of en-route fleet vehicles as well as cargoes.



Addons

- ✔ Track & Trace
- ✔ SMS, Email Alerts
- ✔ Overspeeding
- ✔ Realtime Tracking
- ✔ Route Optimization
- ✔ Geofencing
- ✔ Job Module
- ✔ Fuel Management
- ✔ Immobilization
- ✔ Geofencing
- ✔ Violation Tracking
- ✔ Driver Identification
- ✔ Tire Management
- ✔ Expense Report
- ✔ Beacons & Sensors
- ✔ Fatigue Detection
- ✔ Fuel Counter
- ✔ Crash Detection
- ✔ Towing Detection
- ✔ Jamming / Unplug Detection
- ✔ Advanced Driver-Assistance System (ADAS)



PROJECT MANAGEMENT

- Project Audit.
- Implementing MS Project Server.
- Project Performance Management.
- Developing Corporate PM Methodology.
- Establishing Project Management Office.



Masaba services provide the following Project Management services:

1. Project Audit

Measuring how effective your Project Management methodology.

2. Project Management

RFP Preparations, Proposal Evaluation, Contract Negotiation, Project Planning, Execution, Control and Close Out Risk Management, Timely Reporting, and Timely Project Meetings, like;

- Kick-off meetings.
- Steering Committee meetings.
- Status report Meetings.
- Progress Meetings.

3. Implementing MS Project Server

Implementing and training the team to use a central platform that centrally manages a repository for standardized projects and resource data.

4. Project Performance Management

Identifying the required performance baseline, Collect the actual project progress, Produce reporting dashboards to reflect the project performance in terms of:

- Project cost variance.
- Project schedule variance.
- Project managers' performance.
- Team members' performance.

5. Developing Corporate PM Methodology

We will work with the organization and apply the best practices to produce the most suitable methodology that fits the customer's environment

6. Establishing Project Management Office

The project management office will Own the overall organization PM vision, Own an overall view of the ongoing projects, Introduce the proper Project Management tools, Take over the runaway projects, management tools, Take over the runaway projects,

Establish risk mitigation processes, Review and manage the project portfolio and etc.



"We are the masters of reliability. We take pride in offering our customers services that they can depend on for **stable operations.**"



Past Projects

We have done microwave installation and maintenance, BTS Swaps, long hauls, for Ericsson and Nokia in Kenya, Uganda, and Gabon. We have deployed and supported over 20,000 clients for Safaricom. This is mainly in FTTX on enterprise and home connections. With ATC we have done BTS rehabilitation and maintenance. We have also provided Fibre services, network rehabilitation, and upgrades for TKL in various parts of the country. We have provided turnkey fibre rollout for over 1000km for Safaricom FTTS, 100 km for Nofbi Kenya, over 100km in Comoros, and 50km for Huawei MTN Uganda. We have also deployed over 100km of transmissions for Kalparu Uganda Electricity.



**Fibre to home
installations**



**Overhead fiber
deployment**



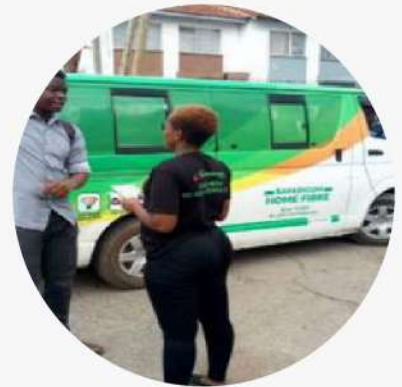
**Underground fiber
deployment**



**Tower Erection
Works**



**Road Construction
Works**



Reseller Services

Our Partners

Some of our esteemed clients include:



MASABA SERVICES

MASTERS OF RELIABILITY

Contact

Jacaranda Avenue, Off Gitanga Road, House No.17
P.O. BOX 420-00517 Nairobi, Kenya



www.masabaservices.com

info@masabaservices.com

+254 020240080

